

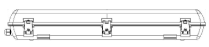
# Linea Series

## Dual Output - LED Linear Batten

IP65 and Impact Resistant (IK10)

Advanced Multi-Stage Sensor System

Available in 2 & 4 Foot Standard & Emergency Variants



### External Linear Batten (IP65)

Part Code	Description	Power	CCT	Lumen	IP Rating
SYN-CL-LSM-SSL-2FT-S18W	LINEA 2 Foot - 18 Watt LSM-SSL Series IP65 Rated LED Luminaire. Complete with ntergrated "Quick Connect" LED Light Engine, Driver and Sensor.	18w	5700K	1980lm	65
SYN-CL-LSM-SSL-2FT-S18WEM	LINEA 2 Foot - 18 Watt LSM-SSL Series IP65 Rated LED Luminaire. Complete with ntergrated "Quick Connect" LED Light Engine, Driver and Sensor.	18w	5700K	1980lm	65
SYN-CL-LSM-SSL-4FT-S18W	LINEA 2 Foot - 18 Watt LSM-SSL Series IP65 Rated LED Luminaire. Complete with ntergrated "Quick Connect" LED Light Engine, Driver and Sensor.	36w	5700K	3960lm	65
SYN-CL-LSM-SSL-4FT-S36WEM	LINEA 2 Foot - 18 Watt LSM-SSL Series IP65 Rated LED Luminaire. Complete with ntergrated "Quick Connect" LED Light Engine, Driver and Sensor.	36w	5700K	3960lm	65

Order Code	Type	Capacity
SYN-LSM-SSL-4-LI-BAT	LiFe04 Lithium Battery Pack complete with integrated low voltage cutoff switch	1500mAh

**5** Years Extended Warranty

**Emergency** Manual Test

**Multi** Sensor

## General Specifications

Voltage 220-240Vac 60hZ

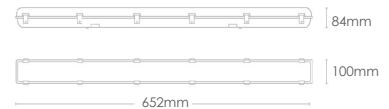
CRI 80  
 Life Time 50,000Hrs  
 Power Factor 0.95  
 Ambient Temp -20°C to 50°C  
 Housing Polycarbonat  
 IK Rating IK10  
 Protection Class II, IP65  
 Compliance AS/NZS 60598.1 2017 AS2293.3 2018

2FT C0:D100, C90:D50 (Minimum Discharge 4hr)

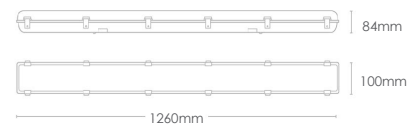
4FT C0:D80, C90:D50 (Minimum Discharge 4hr)

## Dimensions

SYN-CL-LSM-SSL-2FT-18W  
 SYN-CL-LSM-SSL-2FT-18WEM (Emergency Variant)

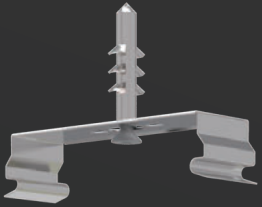


SYN-CL-LSM-SSL-4FT-36W  
 SYN-CL-LSM-SSL-4FT-36WEM (Emergency Variant)



# Linea Series LED IP65 Batten

available in Standard - Self-test & Wireless Emergency

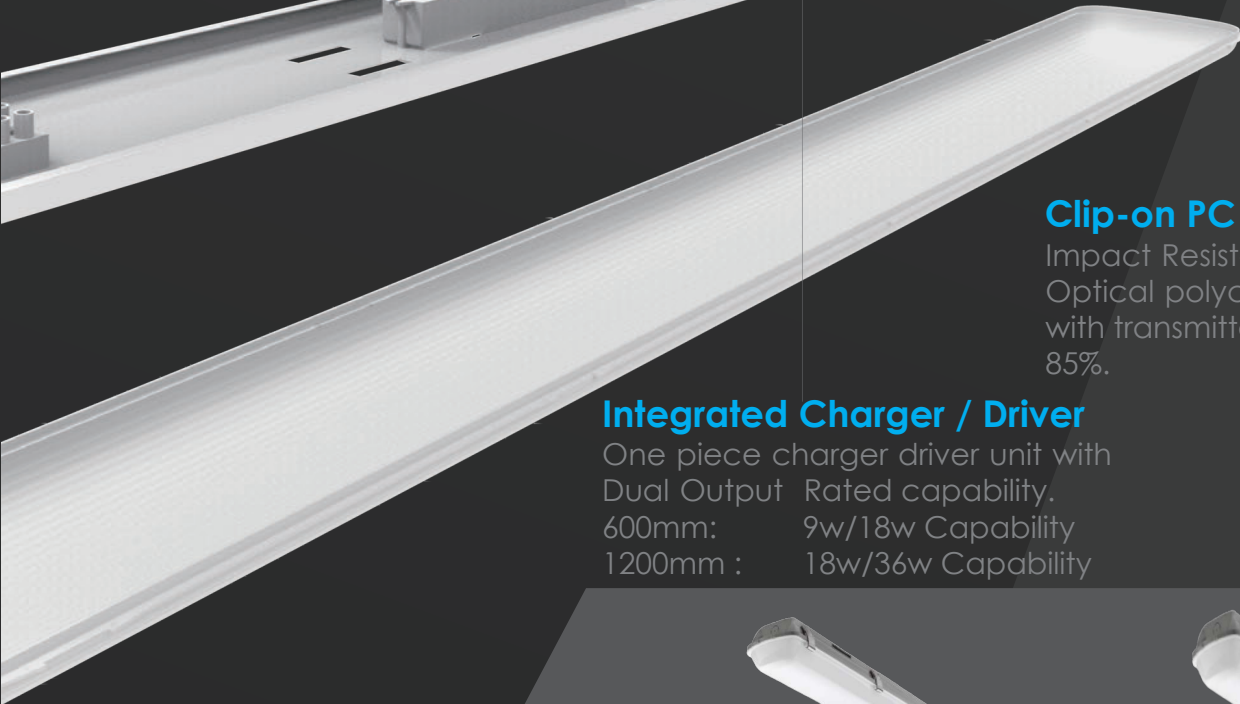
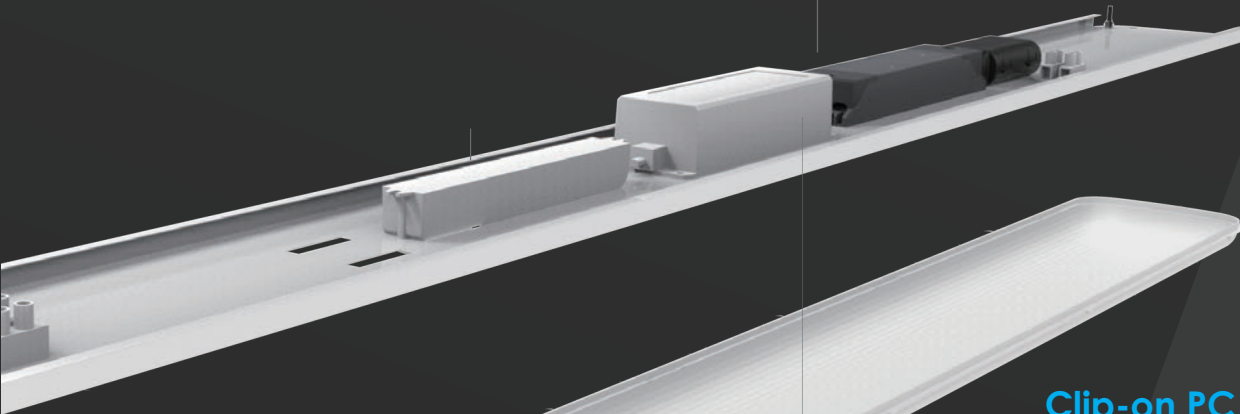
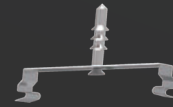


## LiFe 04 Polymer Emergency Battery Packs

All models come complete with a long life Lithium Battery Pack.

## High Quality Injection Moulded Housing

Uses UV stabilised and fire resistant polycarbonate housing designed for the harsh Australian environment.



## Clip-on PC Diffuser

Impact Resistant (IK08 Rated)  
Optical polycarbonate Diffuser  
with transmittance rating above  
85%.

## Integrated Charger / Driver

One piece charger driver unit with  
Dual Output Rated capability.

600mm: 9w/18w Capability  
1200mm : 18w/36w Capability



**Dual 9w /18W 2 ft**

Standard & Emergency



**Dual 18w /36W 4 ft**

Standard & Emergency

# IP, Ingress Protection

IPxx	1st digit – Solid Bodies	2nd digit – Liquid
0	No protection	No protection
1	Protection against solid bodies greater than 50mm	Protection against vertical drops of water on a device in normal position
2	Protection against solid bodies larger than 12mm	Protection against drops of water with an inclination of 15 ° maximum compared to the normal position -one side
3	Protection against solid bodies larger than 2,5mm	Protection against rainwater if it does not have an angle of more than 60 ° with the vertical
4	Protection against solid bodies larger than 1mm	Protection against splashing water
5	Protection against dust deposits	Protection against spraying water jets
6	Protection against the penetration of dust (waterproof)	Protection against water waves, powerful jets
7		Protection against temporary immersion
8		Protection against prolonged immersion

# IK, Impact resistance index

IKxx	Definition
0	No Protection
01	Protected against a shock equivalent to falling from a weight of 150g to a height of 10cm
02	Protected against a shock equivalent to falling from a weight of 200g to a height of 10cm
03	Protected against a shock equivalent to falling from a weight of 250g to a height of 15cm
04	Protected against a shock equivalent to falling from a weight of 250g to a high of 20cm
05	Protected against a shock equivalent to falling from a weight of 350g to a high of 20cm
06	Protected against a shock equivalent to falling from a weight of 250g to a height of 40cm
07	Protected against shock equivalent to falling from a weight of 500g to a height of 40cm
08	Protected against a shock equivalent to falling from a weight of 1250g to a height of 40cm
09	Protected against a shock equivalent to falling from a weight of 2500g to a height of 40cm
10	Protected against a shock equivalent to falling from a weight of 5000g to a height of 40cm

# Classification: protection against electric shock

IKxx	Definition
Class 0	Functional insulation without earth connection
Class 1	Functional insulation with earth terminal, equipotential bonding
Class 2	Reinforced insulation without accessible metal parts. Double insulation without grounding
Class 3	Luminaires operating at very low voltage safety (SELV) of 50V maximum

# Product Warranties\*

## Emergency Luminaires



All emergency modules and fittings have a 5 year product replacement warranty. (Excludes Batteries)

---

## Standard Luminaires



ALL EXTENDED WARRANTIES REQUIRE SITE REGISTRATION IMMEDIATELY UPON COMPLETION  
REGISTRATION CAN BE DONE VIA OUR WEBSITE  
[www.syntechinternational.com.au](http://www.syntechinternational.com.au)

# Warranty Policy

## **LED Lighting Product Warranty:**

Syntech International Pty Ltd warrants that all LED lighting products comply with their published specifications and are free from defects in materials and workmanship for the respective periods of time set forth below.

Syntech lighting products with rated life of greater than 50,000 hours are warranted for a minimum of 5 years (excludes battery products - refer applicable battery warranty terms). . An extended 5 year warranty can be offered if the 'Application for an extended 5 year warranty form' is approved. Should a Syntech LED lamp or luminaire fail within the warranty period from the invoice date, Syntech will provide replacement products free of charge. The acceptance of any claim under this warranty is subject to our warranty terms and conditions.

If the product is no longer available, Syntech will provide the closest alternative product or the value of alternative product at its absolute discretion. If a close alternative product is not available, Syntech will reimburse the warranty holder with the last price paid for the original product. The obligation to replace any product under the terms of this warranty shall only apply where it has been used for its intended or ordinary purpose and provided always that the following conditions have been met:

Syntech LED products must be installed correctly, in accordance with the product information detailed on our packaging, instruction sheets, product data sheets and best industry practice.

Syntech LED products under this warranty should not be operated over 5000 hours per year on average within the warranty period. If the Syntech LED product is intended to be used for more than 5000 hours a year, a separate Warranty will be issued upon request.

## **Syntech LED products are designed to operate within the following parameters:**

Ambient Temperature: -20°C to +40°C

Relative Humidity: <80%

### LED Lamps Fitted Into Open Luminaries:

Syntech LED lamps are designed to be used in "open luminaries" and should have a minimum of 10mm air flow around the body of the lamp at all times.

### LED Lamps Fitted Into Enclosed Luminaries:

Syntech LED lamps are not designed to be used in completely enclosed luminaries where air flow is prevented. The lamp life of Syntech LED lamps in such fittings will be reduced and is unquantifiable and as such will fall outside of the terms of this warranty.

### Syntech Mains Voltage LED Products:

Syntech mains voltage LED products are designed to operate at 230V (+/- 10%) 50-60Hz in-line with AS/NZS Standards. Any fluctuation in excess of this will invalidate the terms of this warranty.

### Syntech 12V LED Products:

For all Syntech 12V LED lamps, this warranty will only be valid if they are used with 12V DC constant voltage LED Driver. Unless stated otherwise, the use of halogen lamp transformer with Syntech 12V LED products invalidates this warranty

### Syntech LED Tubes:

The Syntech LED tube range must be installed as directed in the installation guide. LED tubes may be used in enclosed luminaires, however they must operate in an ambient temperature between -20°C to +40°C and have a minimum of 10mm air gap around the tube.

### Compatibility:

Syntech International Pty Ltd cannot be held responsible for incompatibility of any lamp or luminaire with other manufacturers' transformers, drivers, dimmers or control gear.

## **Warranty Terms and Conditions:**

### 1. Scope of Warranty

1.1 The warranty shall only apply to Syntech branded lighting products sold in all states of Australia & NZ (the 'Product') and shall apply for the benefit of a purchaser or end user (the 'User').

1.2 In these terms Syntech refers to Syntech International Pty Ltd



Syntech International Pty Ltd  
Unit 39 No 5 Anella Ave Castle Hill 2154 Sydney NSW Australia  
Tel: + 61 2 9901 3800 Fax: + 61 2 86026294 email: [admin@syntechinternational.com.au](mailto:admin@syntechinternational.com.au)

[www.syntechinternational.com.au](http://www.syntechinternational.com.au)