

# Trident Ultra

Tunable White- SMD LED Commercial Down Light  
3 Industry Standard Sizes - Four Modular Reflector Options - Triac Dimmable



**5 Years**  
Extended Warranty

**Tunable White**

**Triac Dimmable**

Tunable White  
Slide Selection Switch



## Commercial LED Down Light (Recessed)

Part Code	Description	Power	CCT	Lumen	IP Rating
SYN-HU-TW10W-110-80-1.5	10w & 13w TRIDENT ULTRA 110mm O/D 90mm Cut Out IP54 Rated, Tunable White, Triac Dimmable Down Light with Recessed Internal Reflector, and 1.5m Power Cord & Plug, 3	10W	3000K/4000K/5700K	700lm/770lm/800lm	54
SYN-HU-TW13W-110-80-1.5		13W	3000K/4000K/5700K	900lm/970lm/1100lm	54
SYN-HU-TW18W-175-80-1.5	18w & 25w TRIDENT ULTRA 175mm O/D 150mm Cut Out IP54 Rated, Tunable White Triac Dimmable Down Light with Recessed Internal Reflector, and 1.5m Power Cord & Plug,	18W	3000K/4000K/5700K	1650lm/1720lm/1950lm	54
SYN-HU-TW25W-175-80-1.5		25W	3000K/4000K/5700K	2100lm/2190lm/2250lm	54
SYN-HU-TW25W-228-80-1.5	25w/3w/40/45w TRIDENT ULTRA 228mm O/D 175-200 Mm Cut Out IP54 Rated, Tunable White, Triac Dimmable Down Light with Recessed Internal Reflector, and 1.5m Power Cord & Plug,	25W	3000K/4000K/5700K	2450lm/2520lm/2800lm	54
SYN-HU-TW30W-225-80-1.5		30W	3000K/4000K/5700K	3750lm/3900lm/4200lm	54
SYN-HU-TW40W-228-80-1.5		25W	3000K/4000K/5700K	4000lm/4180lm/4400lm	54
SYN-HU-TW45W-228-80-1.5		30W	3000K/4000K/5700K	4360lm/4500lm/4950lm	54

## General Specification

Voltage 220-240Vac 50-60Hz

LOR 82%

Ambient Temp 0°C to 50°C

Housing Polycarbonate

IK Rating IK10

Protection Class II, IP54



Black  
reflect



White  
reflect

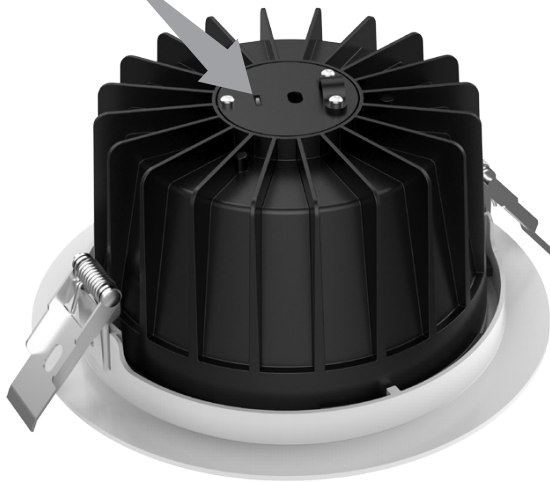


Matt  
silver  
reflector



Bright  
silver  
reflector

Trident Ultra with  
slide switch color  
selection



The Trident Ultra Downlight incorporates a traditional deep reflector that provides a perfect combination of high lighting efficiency, comfortable lighting and humanization design, without compromising on lighting performance (color rendering and color uniformity). CCT changeable function is available. It offers a wide choice of performance options for creating the desired ambiance.

## Features

1. Die-casting housing provides excellent heat dissipation performance.
2. A perfect alternative to traditional recessed luminaries.
3. CCT can be switched through slide button.
4. Triac dimmable, DALI, 0-10V function can be realized by functional driver.
5. Interchangeable reflector in white, matt silver, bright silver and black color. (Remark: There will be 30% lumen decrease should black reflector be required)

## Application Areas

Designed for general lighting applications in office, supermarket, shop, school, hotel, etc. It is also widely used for public areas, such as stairway, lobby, reception, corridors etc.



Black reflector



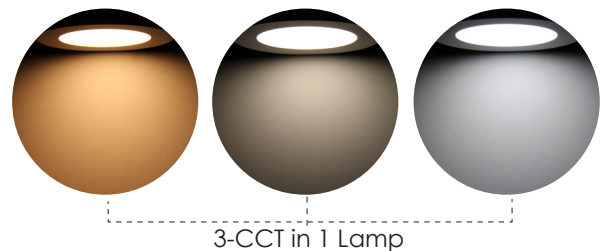
White reflector



Matt silver reflector



Bright silver reflector



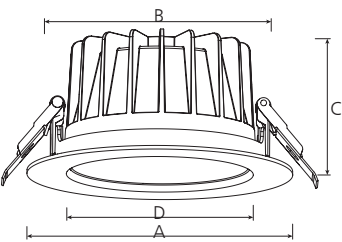
## Driver / Sensor Data

Driver data	Mains Power
Input rated Voltage	AC230V
Frequency	50/60Hz
Input Voltage	AC200-240V
Efficiency	≥88%
No load wattage	≤0.5W
Total load Wattage	10W/13W/18w /25W /30W/40/45W±5%
Power Factor	≥0.9
Rated input current	≤0.14A
Full load output Voltage	60-75V
Rated output current	325mA
Output current range	325mA±5%
Power tolerance	±5%
Current output tolerance	±5%
Hold time	n/a
Detection distance	n/a
Daylight Sensor Settings	n/a
Standby Dimming Level	n/a
Standby Period (Time)	n/a
Withstand voltage	n/a

## Fixture Classification

Rated Wattage	Ingress Protection	Operating Temp	Operating Humidity	Storage Temp
10W/13W/18w /25W /30W/40/45W ±5%	IP54	-20°C~45°C	0~90%	-20°C~65°C

## Dimensions

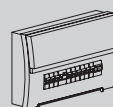


Diameter	Dimension(mm)				Size(mm)
	A	B	C	D	
110mm	110	86	54	69	Ø110*54
172mm	172	145	90	127	Ø172*90
228mm	228	195	99	176	Ø228*99

# Installation Procedure

## WARNING

1. Switch off before installation.
2. Switch on only after complete installation and examination of the circuit.
3. Professional electrician for installation and maintenance only.

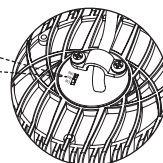


Turn Off power supply before starting any installation. Read instructions & check you have all the tools & accessories to complete the installation correctly.

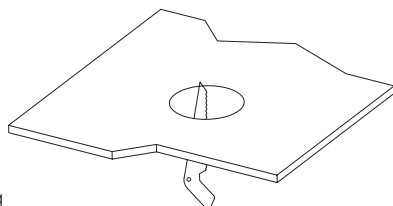
## ■ Installation

For the product with Slide Switch of Color Selection, please select the light color (DL/CW/WW) before installation.

Slide switch for color selection

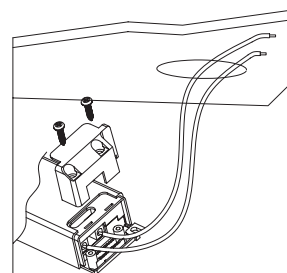


### Step 1



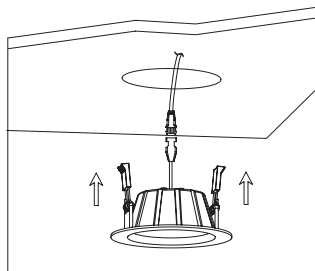
Open a hole according to the cutout size of led downlight.

### Step 2



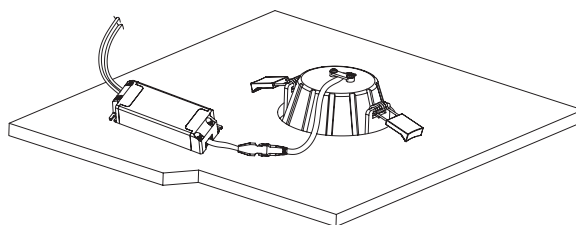
Use screw-driver to open the driver terminal cover, feed the main AC wire L. N. in terminal block respectively, then fix the cover back.

### Step 3



Connect the downlight with driver, hold back the spring clip then push the downlight into the hole.

### Step 4



Connect the downlight with driver, hold back the spring clip then push the downlight into the hole.

# Product Warranties\*

## Emergency Luminaires



All emergency modules and fittings have a 5 year product replacement warranty. (Excludes Batteries)

---

## Standard Luminaires



All standard luminaires have a 5 year product replacement warranty

## WELLS Enabled Emergency Luminaires



**WELLS Managed Installations** are covered by a comprehensive 5 year Warranty on both luminaire and battery packs and labour. (Conditions Apply)

---



ALL EXTENDED WARRANTIES REQUIRE SITE REGISTRATION IMMEDIATELY UPON COMPLETION  
REGISTRATION CAN BE DONE VIA OUR WEBSITE  
[www.syntechinternational.com.au](http://www.syntechinternational.com.au)

## Notes

[illegible]



**SYNTECH INTERNATIONAL PTY LTD**

Unit 39 No 5 Anella Ave Castle Hill 2154 Sydney NSW Australia

Tel: + 61 2 9901 3800 Fax: + 61 2 86026294 email:  
admin@syntechinternational.com.au

[www.syntechinternational.com.au](http://www.syntechinternational.com.au)